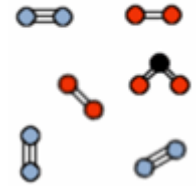


Year 9: Particles and Separating Mixtures

Mixtures

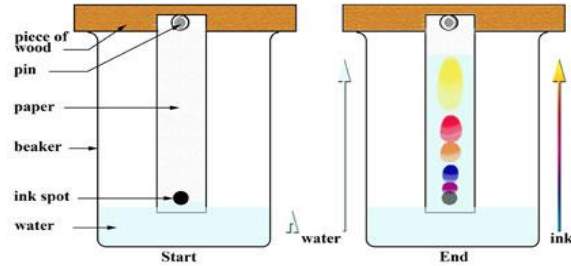
Mixture



Mixture: Made from elements and compounds that are simply mixed together without chemical bonds

Chromatography -used to separate dyes or pigments using a solvent.

Simple chromatography

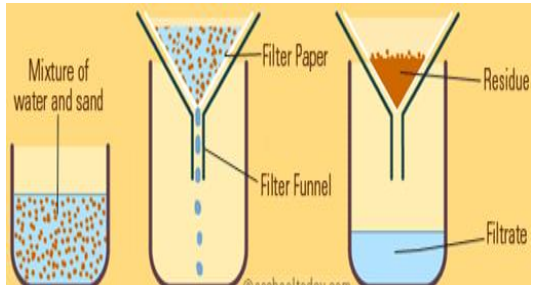


States of Matter

	Flow	Compressibility
Solid	Does not flow. Particles are in fixed positions.	Cannot be compressed. Particles are close together.
Liquid	Flows. Particles are not in fixed positions.	Cannot be compressed. Particles are close together.
Gas	Flows. Particles are not in fixed positions.	Can be compressed. Particles are far apart.

Filtration and Evaporation

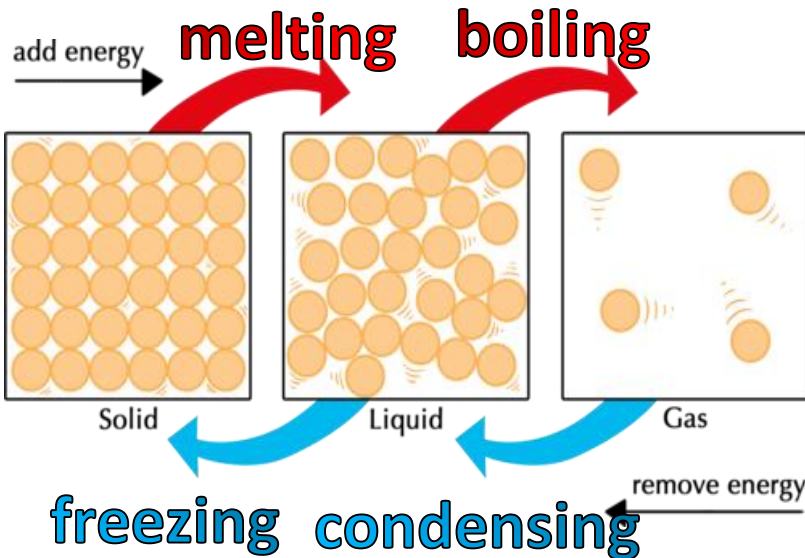
Filtration- used when separating a mixture containing an insoluble solid and a liquid



Evaporation- used when separating a mixture containing a soluble solid from its solvent



Changes of State



Particle models of matter

